

# PERIMETER

**SURVEYING & MAPPING**  
 Prepared by: Jeff S. Hodapp, P.S.M.  
 Certificate of Authorization No. LB7264  
 947 Clint Moore Road  
 Boca Raton, Florida 33487  
 Tel: (561) 241-9988  
 Fax: (561) 241-5182

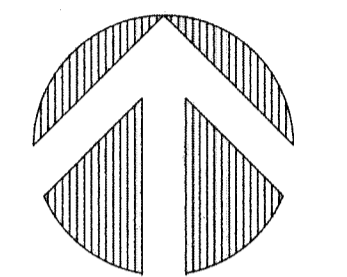
## BOYNTON TRAIL CENTRE MUPD REPLAT

A REPLAT OF ALL OF PARCEL A AND WATER MANAGEMENT TRACT 2, TOGETHER WITH A PORTION OF WATER MANAGEMENT TRACT 1, ALL OF "BOYNTON TRAIL CENTRE", ACCORDING TO THE PLAT THEREOF, AS RECORDED IN PLAT BOOK 48 AT PAGE 191 OF THE PUBLIC RECORDS OF PALM BEACH COUNTY, FLORIDA, IN SECTION 24, TOWNSHIP 45 SOUTH, RANGE 42 EAST, PALM BEACH COUNTY, FLORIDA

SEE SHEET 4  
MATCH LINE

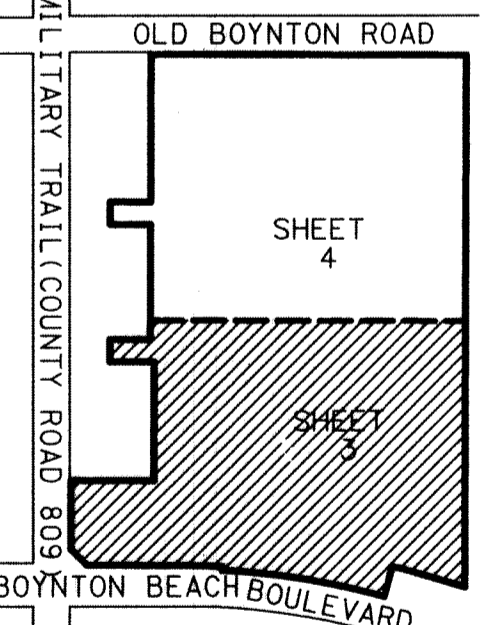
# 98

### SHEET 3 OF 4



**LEGEND:**  
 SET P.R.M. (UNLESS OTHERWISE NOTED) - 4" x 4" CONC. MON. WITH ALUMINUM DISK STAMPED \*LB7264 CENTERLINE

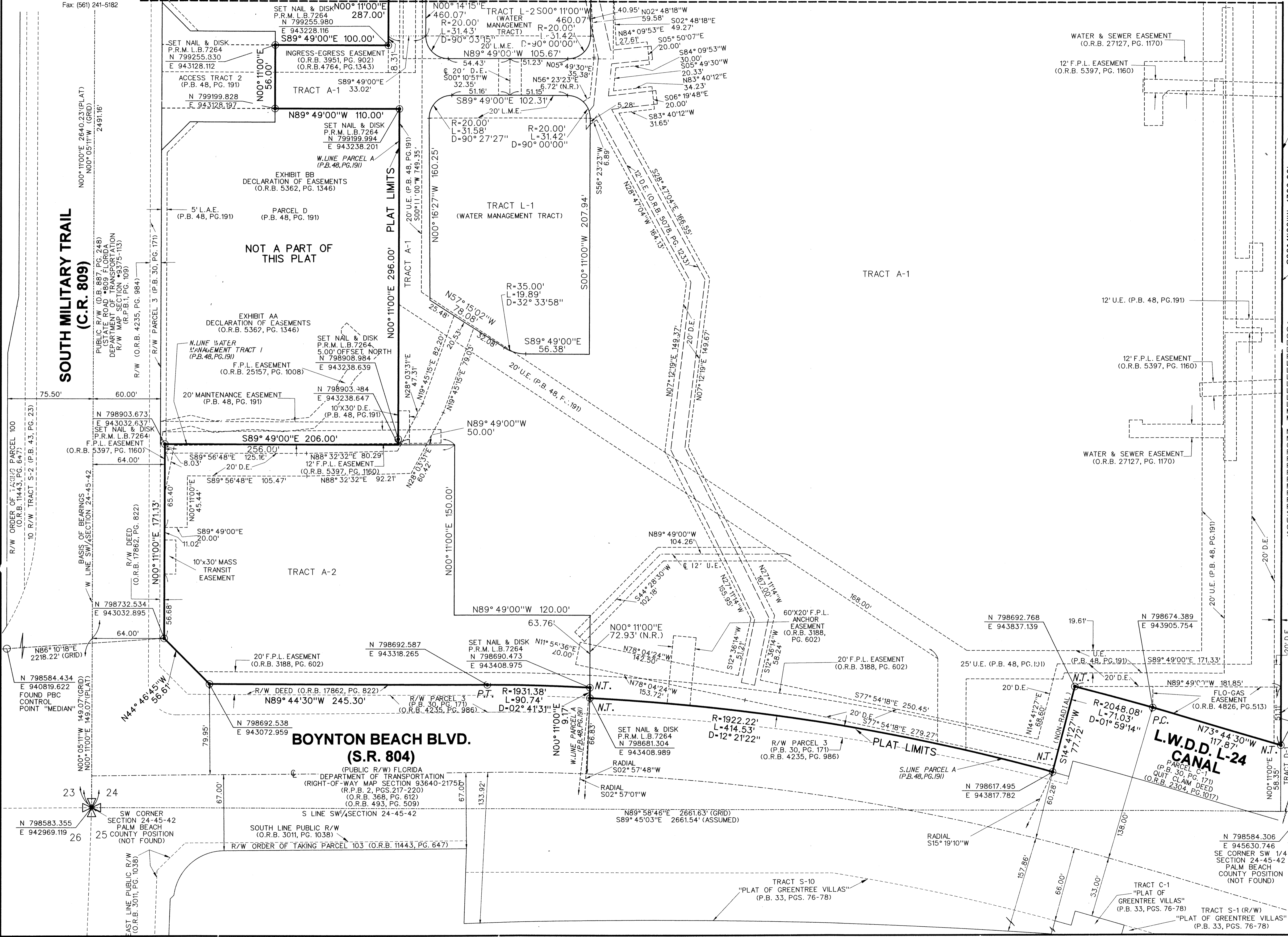
- ABBREVIATIONS:**
- CONC. - CONCRETE
  - COR. - CORNER
  - DEED BOOK - DEED BOOK
  - D.P.E. - DRAINAGE EASEMENT
  - F.P.L. - FLORIDA POWER AND LIGHT
  - L.A.E. - LIMITED ACCESS EASEMENT
  - L.B. - LICENSED BUSINESS
  - L.C.B.E. - LANDSCAPE BUFFER EASEMENT
  - L.M.E. - LAKE MAINTENANCE EASEMENT
  - L.S. - LICENSED SURVEYOR
  - L.S.E. - LIFT STATION EASEMENT
  - L.W.D.D. - LAKE WORTH DRAINAGE DISTRICT
  - MON. - MONUMENT
  - M.U.P.D. - MULTIPLE USE PLANNED DEVELOPMENT
  - N.R. - NON-RADIAL
  - N.T. - NON-TANGENT
  - O.R.B. - OFFICIAL RECORDS BOOK
  - P.B. - PLAT BOOK
  - P.B.C.R. - PALM BEACH COUNTY RECORDS
  - P.C. - POINT OF CURVATURE
  - P.T. - POINT OF TANGENCY
  - P.G. - PAGE
  - P.R.M. - PERMANENT REFERENCE MONUMENT
  - P.S.M. - PROFESSIONAL SURVEYOR & MAPPER
  - R.P.B. - ROAD PLAT BOOK
  - R.O.W. - RIGHT-OF-WAY
  - U.P.E. - UTILITY EASEMENT
  - C.R. - COUNTY ROAD
  - S.R. - STATE ROAD



**NOTES: COORDINATES, BEARINGS AND DISTANCES**

COORDINATES SHOWN ARE GRID DATUM - NAD 83 1990 ADJUSTMENT  
 ZONE - FLORIDA EAST  
 LINEAR UNIT - US SURVEY FOOT  
 COORDINATE SYSTEM - 1983 STATE PLANE TRANSVERSE MERCATOR PROJECTION  
 ALL DISTANCES ARE GROUND, UNLESS OTHERWISE NOTED  
 SCALE FACTOR = 1.0000355  
 GROUND DISTANCE X SCALE FACTOR = GRID DISTANCE  
 ALL BEARINGS AS SHOWN HEREON ARE PLAT, BASED ON AN ASSUMED BEARING OF N00°11'00" EAST ALONG THE WEST LINE OF THE SOUTHWEST ONE-QUARTER OF SECTION 24.

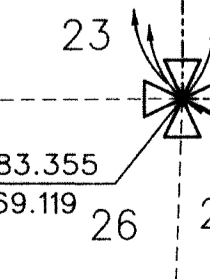
N00°05'11" W  
 GRID BEARING  
 N 00°11'00" E  
 PLAT BEARING  
**BEARING EQUATION**



**SOUTH MILITARY TRAIL (C.R. 809)**

NOT A PART OF THIS PLAT

**BOYNTON BEACH BLVD. (S.R. 804)**



SW CORNER SECTION 24-45-42 PALM BEACH COUNTY POSITION (NOT FOUND)  
 N 798583.355  
 E 942969.119

BEARING EQUATION